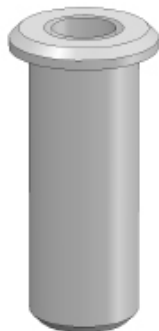


DRAADHULS THREAD INSERT

5 8E 8 8S 10

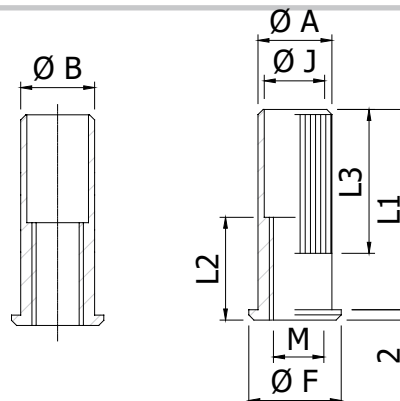


Techn. gegevens / techn. specifications:

- Staal / steel
- Elektrolytisch verzinkt / zinc plated

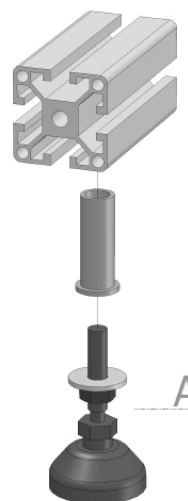
Kenmerk / feature:

- Voor bevestiging van stelvoeten, platen, etc. / for mounting leveling feet, plates etc.
- Perspassing in gat ($\varnothing B$) / press fit in hole ($\varnothing B$)






	$\varnothing B$	$\varnothing A$	M	$\varnothing J$	$\varnothing F$	L1	L2	L3
A	11	11.3	M8	9	15	29	15	16
B	14	14,4	M12	13	18	39	20	26
C	17	17,4	M12	13	20	44	20	32

Toepassing / application



Afname / purchase	Korting / discount
10 stuks / pieces	10%

Accessoires / accessories		Eenheid / unit	Art. code
A	Stelvoet 40 - M12 x 95 Leveling foot 40 - M12 x 95	Stuk / piece	145035

	Art. code	Omschrijving / description	Eenheid / unit
	130400	Draadhuls M8, diam 11 Thread insert M8, diam 11	Stuk / piece
	130410	Draadhuls M12, diam 14 Thread insert M12, diam 14	Stuk / piece
	130415	Draadhuls M12, diam 17 Thread insert M12, diam 17	Stuk / piece