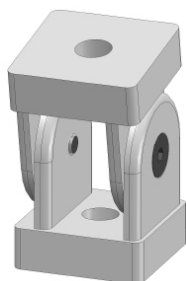


KNIESCHARNIER 30 JOINT 30

5 8E 8 8S 10

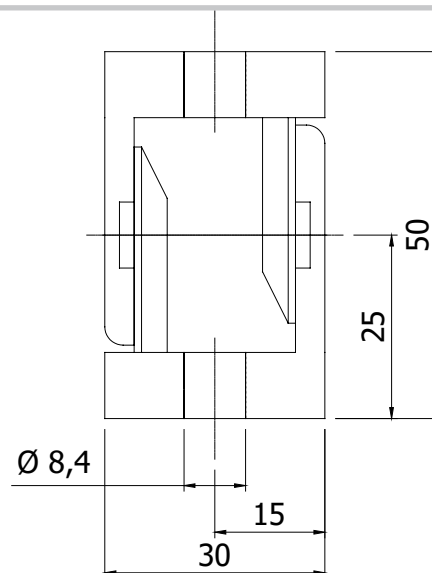
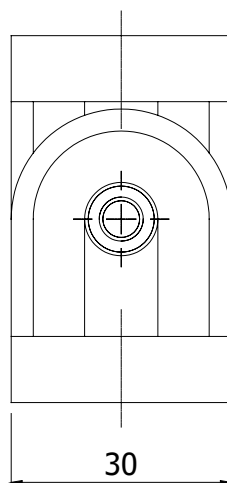


Techn. gegevens / techn. specifications:

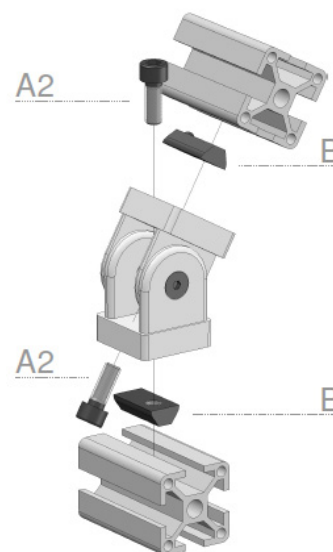
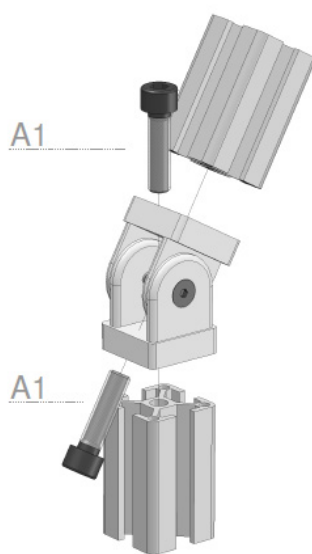
- Gegoten zink / die-cast zinc
- RAL 9006

Kenmerk / features:

- Beweegbare verbindingen tussen profielen / moveable connection between profiles
- Verwijderbare centreerlippen / removable centering lips



Toepassing / application



| Afname / purchase | Korting / discount |
|-------------------|--------------------|
| 50 stuks / pieces | 10% |

| | Accessoires / accessories | Eenheid / unit | Art. code |
|----|--|----------------|-----------|
| A1 | Cilindrische inbusbout M8 x 30 Cylindrical socket screw M8 x 30 | Stuk / piece | 900158 |
| A2 | Cilindrische inbusbout M6 x 16 Cylindrical socket screw M6 x 16 | Stuk / piece | 900098 |
| B | Sleufmoer met kogel 8E - M6 Sliding block 8E - M6 | Stuk / piece | 122310 |

| Art. code | Omschrijving / description | Eenheid / unit |
|-----------|------------------------------|----------------|
| 130500 | Kniescharnier 30 Joint 30 | Stuk / piece |