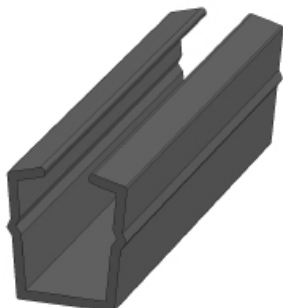


RAAMPROFIEL RIM PROFILE

5 8E 8 8S 10

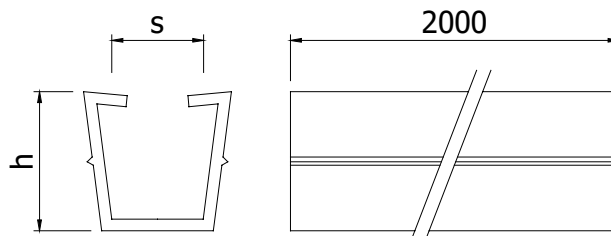


Techn. gegevens / techn. specifications:

- PVC
- Zwart / black

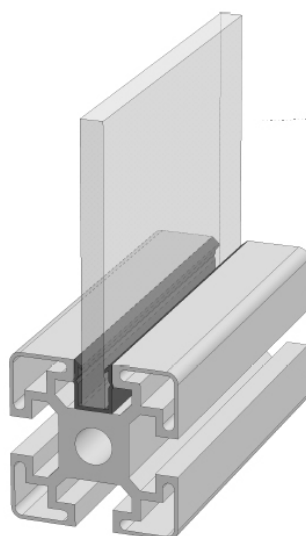
Kenmerk / feature:

- Vastzetten van plaatmateriaal in de sleuven van profielen / to fasten plates in the groove of the profiles
- Raamprofiel sleuf 8 alleen geschikt voor plaatdiktes tussen 5 en 6 mm / mounting rim profile groove 8 is only compatible with plate thicknesses between 5 and 6 mm

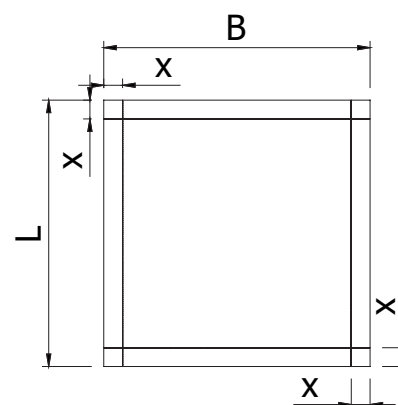


| | h | s |
|----|------|-------|
| 8 | 11 | 5 - 6 |
| 10 | 12,7 | 2 - 8 |

Toepassing / application



A1 / A2



Overlengte x bij gebruik in profielen met sleuf:
/ extra length x for use in profiles with grooves:

| | 8 | 10 |
|---|----|----|
| x | 10 | 10 |

Accessoires / accessories

| | | | |
|----|--|----------------|--------|
| A1 | Polycarbonaat, L x B Polycarbonate, L x W | m ² | 4111xx |
| A2 | HPL, L x B HPL, L x W | m ² | 4112xx |

POWERED BY BOIKON

| | Art. code | Omschrijving / description | Eenheid / unit |
|----|-----------|--|----------------|
| 8 | 141050 | Raamprofiel 8, L=2 m Rim profile 8, L=2 m | Stuk / piece |
| 10 | 141055 | Raamprofiel 10, L=2 m Rim profile 10, L=2 m | Stuk / piece |